



31 OCT 2024



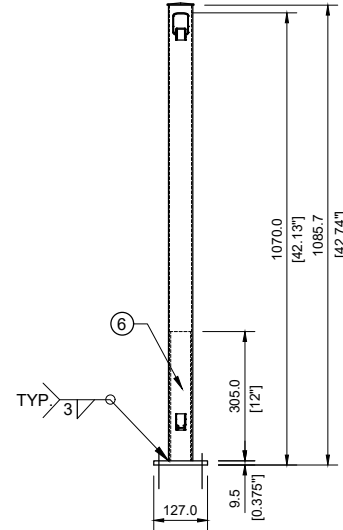
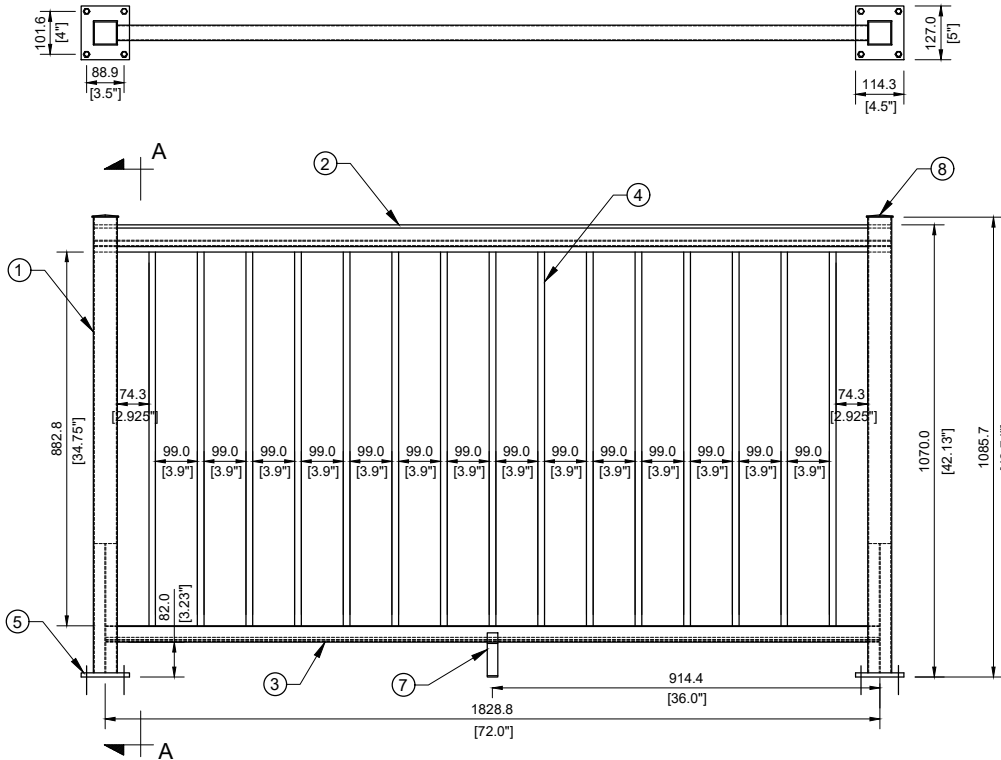
MARK	DESCRIPTION	PROFILE	MATERIAL	LENGTH	WEIGHT (kg)	QTY	TOTAL WT.
1	Post	HSS 57.15X57.15X2.5	6061 - T6	1076.2	2.05	2	4.10
2	Top rail	-	6061 - T6	1880	1.92	1	1.92
3	Bottom rail	-	6061 - T6	1825	0.82	1	0.82
4	Picket	15.8X15.8	6061 - T6	922	0.62	15	9.30
5	Mounting plate	PL 9.5 x 114.3	6061 - T6	127	0.37	2	0.74
6	Post insert	I - shape	6061 - T6	305	0.24	2	0.48
7	Support leg	PL 3	6061 - T6	25.4	0.04	1	0.04
8	Post cap	-	6063 - T5	-	0.04	2	0.08
							17.48



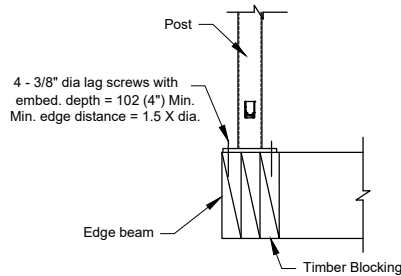
31 OCT 2024



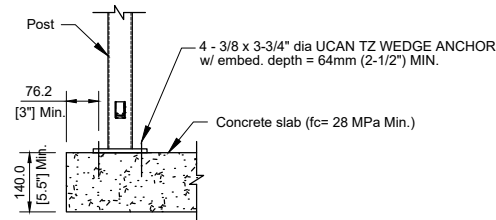
31 OCT 2024



SECTION A-A



TYPICAL TOP MOUNTED DETAIL ON TIMBER FLOOR



TYPICAL TOP MOUNTED DETAIL ON CONCRETE FLOOR

No	DATE	REVISIONS	DRAWN	CHECK
4	31 OCT. 2024	REMOVE STIFFENERS AND ADDING INSERTS	EY	EG
3	11 APR. 2023	REVISED AS CLOUDED	EY	EG
2	21 JAN. 2020	ADDING EDGE DISTANCE NOTE	EY	EG
1	29 JUL. 2019	STIFFENERS ARE REVISED	EY	EG
0	20 OCT. 2018	ISSUED FOR FABRICATION	EG	EG

Drawing prepared by:



554 Silverado, SW, Calgary, AB
 Phone: (403) 617-4801
 ehab.girgis@gplusengineering.com
 www.gplusengineering.com

Client :

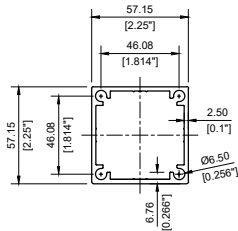
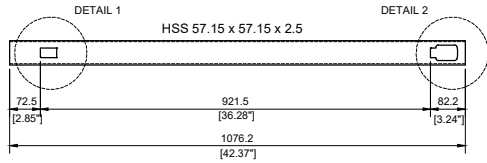
Home-Rail Ltd.

Drawing Title :

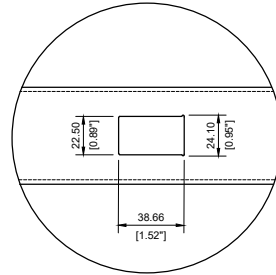
**5/8" PICKET RAIL - 42" HIGH
 TOP MOUNTED**

Scale :	NTS	Drawing No.	H2-1	REV.	4
Project No. :	1813				

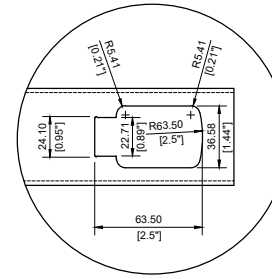
① - QTY=2



TYP. POST CROSS SECTION

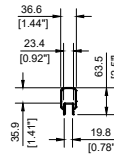
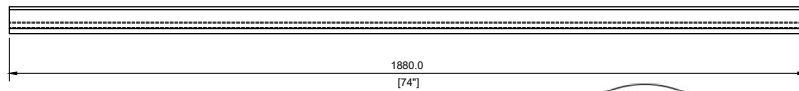


DETAIL 1

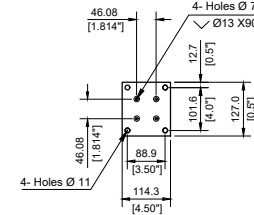


DETAIL 2

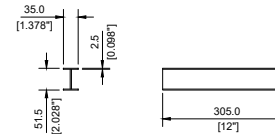
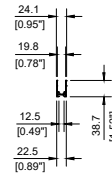
② - QTY=1



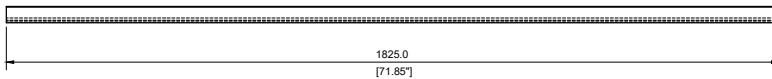
⑤ - QTY=2
PL 9.5



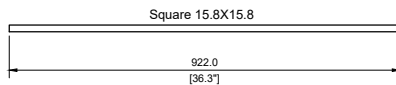
⑥ - QTY=2
I-shape insert



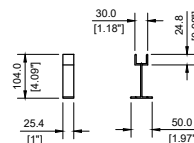
③ - QTY=1



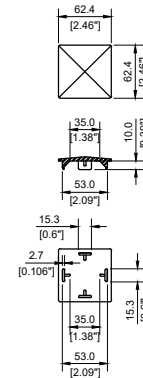
④ - QTY=15



⑦ - QTY=1
PL 3



⑧ - QTY=2



31 OCT 2024



31 OCT 2024



No	DATE	REVISIONS	DRAWN	CHECK
2	31 OCT. 2024	REMOVE STIFFENERS AND ADDING INSERTS	EY	EG
1	29 JUL. 2019	STIFFENERS ARE REVISED	EY	EG
0	20 OCT. 2018	ISSUED FOR FABRICATION	EG	EG

Drawing prepared by:

 554 Silverado, SW, Calgary, AB
 Phone: (403) 617-4801
 ehab.girgis@gplusengineering.com
 www.gplusengineering.com

Client :
Home-Rail Ltd.

Drawing Title :
**5/8" PICKET RAIL - 42" HIGH
 TOP MOUNTED**

Scale :	NTS	Drawing No.	H2-2	REV.	2
Project No. :	1813				