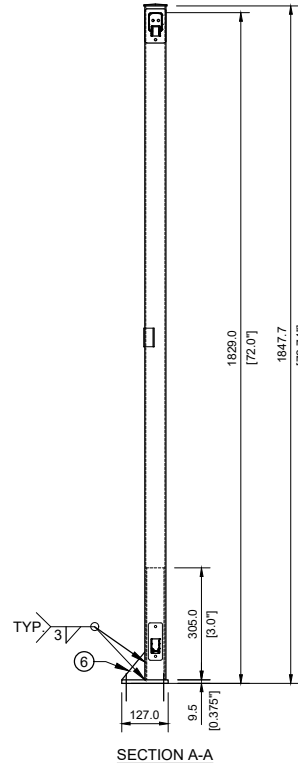
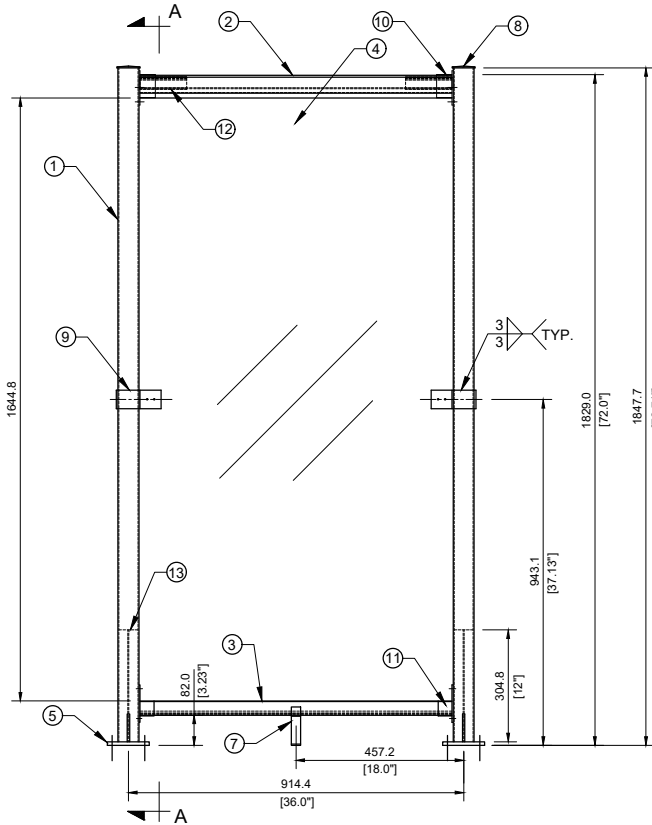
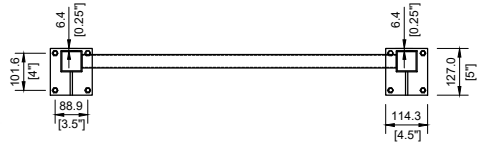




31 OCT 2024



MARK	DESCRIPTION	PROFILE	MATERIAL	LENGTH	WEIGHT (kg)	QTY	TOTAL WT.
1	Post	HSS 57.15X57.15X2.5	6061 - T6	1838.2	3.50	2	7.00
2	Top rail	-	6061 - T6	851.3	0.87	1	1.92
3	Bottom rail	-	6061 - T6	851.3	0.38	1	0.38
4	Glass	6 x 851 x 1684.8	Tempered glass conform to CAN/CGSB-12-M90	-	-	1	-
5	Mounting plate	PL 9.5 x 114.3	6061 - T6	127	0.37	2	0.74
6	Stiffener plate	PL 6.35 x 63.5	6061 - T6	76	0.10	2	0.20
7	Support leg	PL 3	6061 - T6	25.4	0.04	1	0.04
8	Post cap	-	6063 - T5	-	0.04	2	0.08
9	Clip	PL 3.18 x 50.8	6061 - T6	122.1	0.065	2	0.13
10	Top rail bracket	-	6061 - T6	-	0.09	2	0.18
11	Bott. rail bracket	-	6061 - T6	-	0.054	2	0.11
12	Top rail insert	-	6061 - T6	-	0.077	2	0.15
13	Post insert	I-shape	6061 - T6	305	0.24	2	0.48
							11.41



31 OCT 2024



24 10 31

E. Y. Girgis



31 OCT 2024

E. Y. K. Girgis

No	DATE	REVISIONS	DRAWN	CHECK
3	31 OCT. 2024	CHANGE INSET TO I-SHAPE	EY	EG
2	21 JAN. 2020	ADDING EDGE DISTANCE NOTE	EY	EG
1	23 SEP. 2019	STIFFENER AND INSERT LENGTH ARE REVISED	EY	EG
0	20 OCT. 2018	ISSUED FOR FABRICATION	EG	EG

Drawing prepared by:



554 Silverado, SW, Calgary, AB
 Phone: (403) 617-4801
 ehab.girgis@gplusengineering.com
 www.gplusengineering.com

Client :

Home-Rail Ltd.

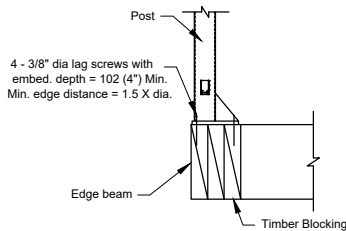
Drawing Title :

**WIND WALL GLASS - 72" HIGH
TOP MOUNTED**

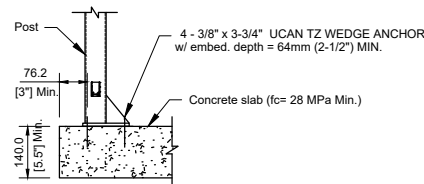


E. Y. K. GIRGIS
100565045

31 OCT 2024



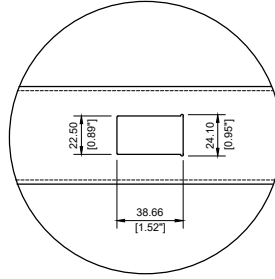
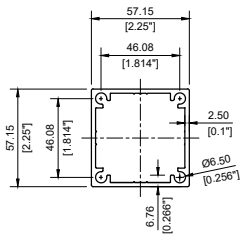
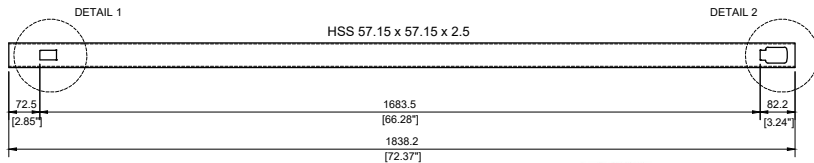
TYPICAL TOP MOUNTED DETAIL ON TIMBER FLOOR



TYPICAL TOP MOUNTED DETAIL ON CONCRETE FLOOR

Scale :	NTS	Drawing No.	REV.
Project No. :	1813	H4-1	3

① - QTY=2



TYP. POST CROSS SECTION

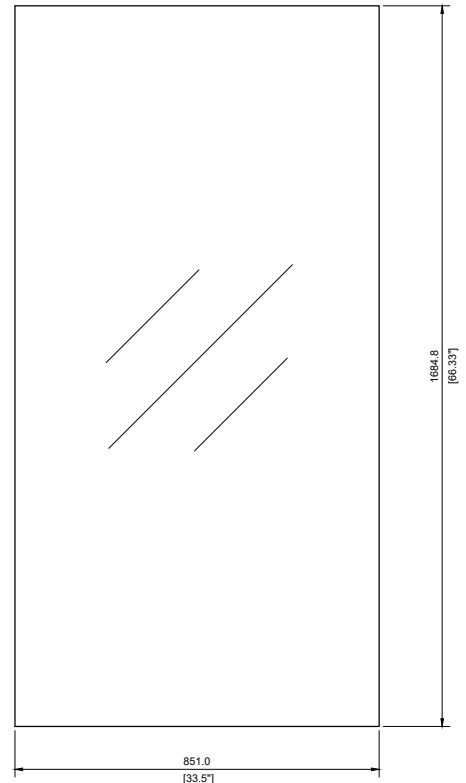
DETAIL 1



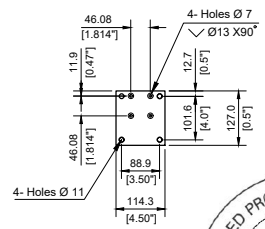
20 OCT 2018

20 OCT 2018

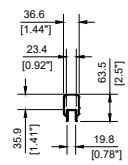
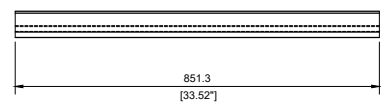
④ - QTY=1
Glass 6 mm thick.



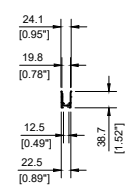
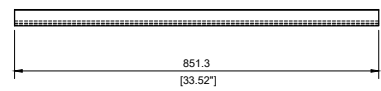
⑤ - QTY=2
PL. 9.5



② - QTY=1



③ - QTY=1



20 OCT 2018

0	20 OCT. 2018	ISSUED FOR FABRICATION	EG	EG
No	DATE	REVISIONS	DRAWN	CHECK

Drawing prepared by:



554 Silverado, SW, Calgary, AB
Phone: (403) 617-4801
ehab.girgis@gplusengineering.com
www.gplusengineering.com

Client :

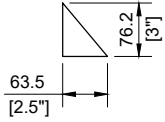
Home-Rail Ltd.

Drawing Title :

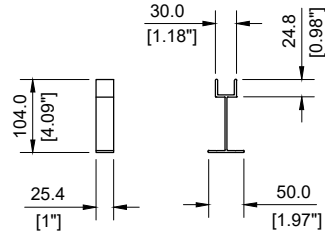
**WIND WALL GLASS - 72" HIGH
TOP MOUNTED**

Scale :	NTS	Drawing No.	H4-2	REV.	0
Project No. :	1813				

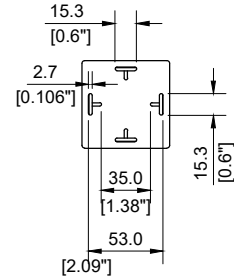
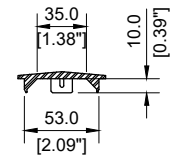
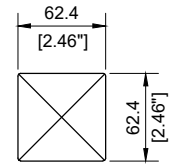
⑥ - QTY=2
PL. 6



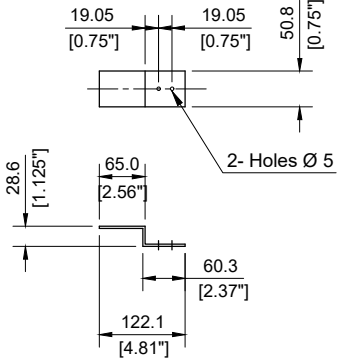
⑦ - QTY=1
PL. 3



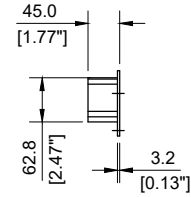
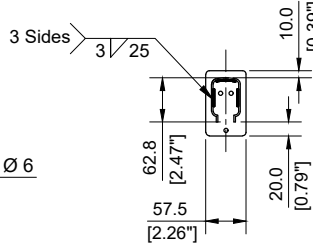
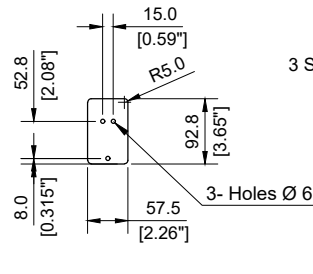
⑧ - QTY=2



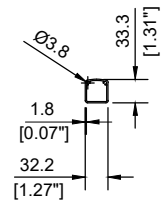
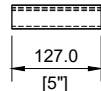
⑨ - QTY=2
PL 3.18



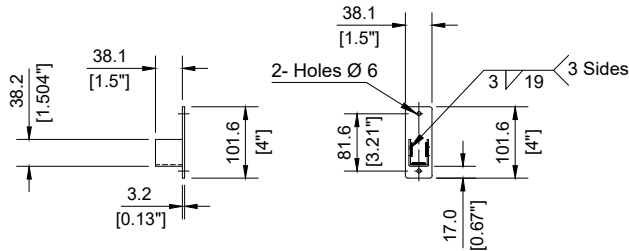
⑩ - QTY=2



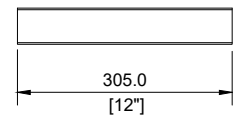
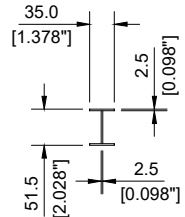
⑫ - QTY=2



⑪ - QTY=2



⑬ - QTY=2
I-shape insert



No	DATE	REVISIONS	DRAWN	CHECK
2	31 OCT. 2024	CHANGING THE POST INSERT TO I-SHAPE	EY	EG
1	23 SEP. 2019	STIFFENER AND INSERT LENGTH ARE REVISED	EY	EG
0	20 OCT. 2018	ISSUED FOR FABRICATION	EG	EG

Drawing prepared by:

554 Silverado, SW, Calgary, AB
 Phone: (403) 617-4801
 ehab.girgis@gplusengineering.com
 www.gplusengineering.com

Client :

Home-Rail Ltd.

Drawing Title :

**WIND WALL GLASS - 72" HIGH
TOP MOUNTED**

Scale :	NTS	Drawing No.	H4-3	REV.	2
Project No. :	1813				